

**BILL'S OLD BIKE BARN: OCTOBER 31-NOVEMBER 1, 2020..... RIDE REPORT**

The riders:

Rich A. / Long Island, NY  
Chuck L. / Plainfield, NJ  
Ed R. / Allentown, PA  
Jeremy R. / Long Island, NY  
Doug M. / Media, PA  
Joel S. / Kennett Square, PA

The bikes:

1970 Triumph T100C  
1975 Suzuki T500  
1976 Kawasaki KZ750 twin  
1976 Yamaha RD400  
1977 YAMAHA XS750 triple  
1979 Moto Morini 500 Strada

*After a hearty breakfast, Doug and Chuck ponder the cool early morning weather and secure their luggage.*



***Jeremy getting psyched:  
"Shift on the right,  
brake on the left;  
GOT IT"***

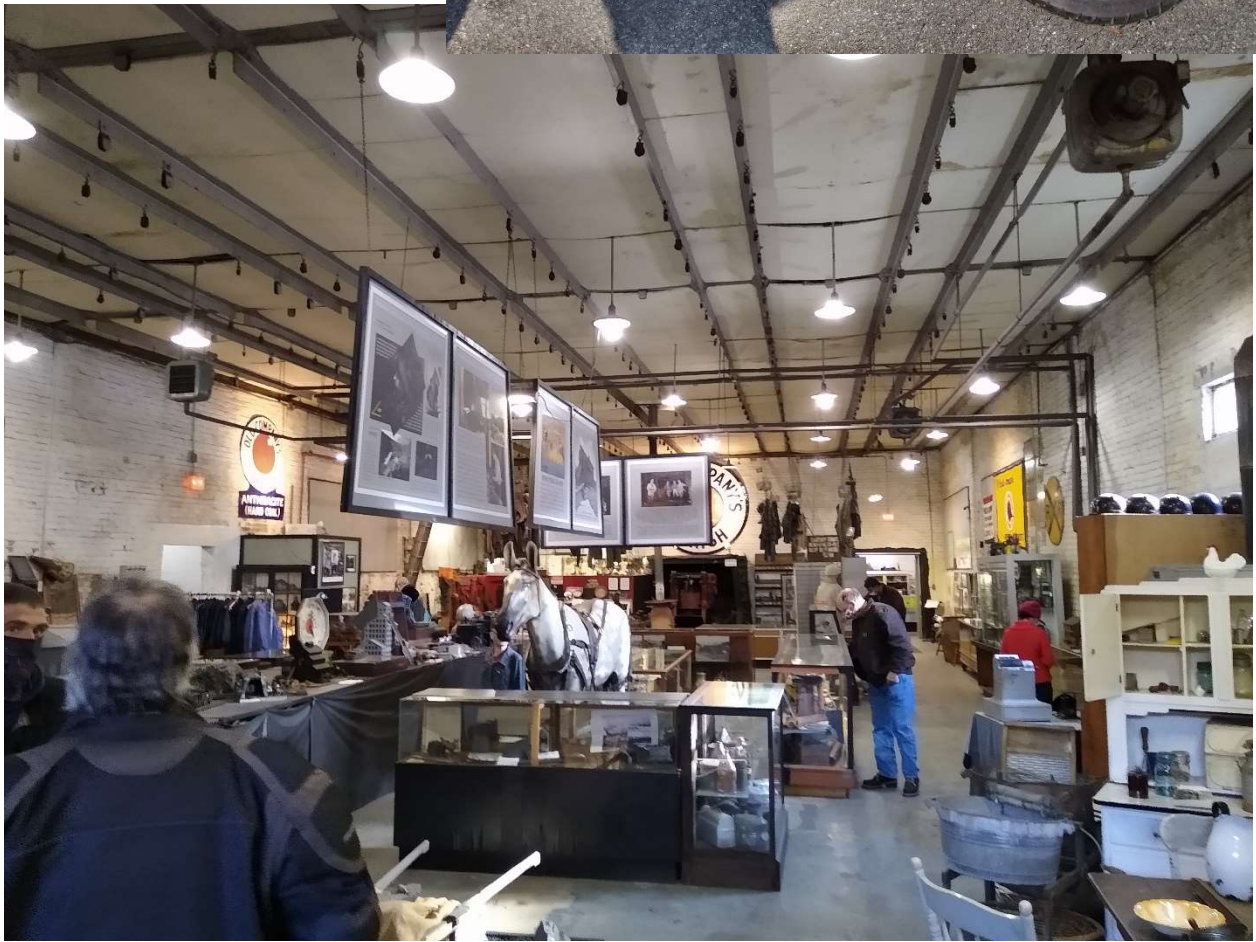




***"I'M PUTTING ON MY HELMET" = TIME TO RIDE!***



*Under perfect Autumn weather:  
a stop at Coal Mine #9,  
100 miles out.*



*Hangin' out in the museum, waiting for a ride down.....*





*....way down, into the mine on this very bumpy rail car. We have to stoop and fold our bodies to fit inside.*

*Dug in 1855 and operated until 1972, this is the oldest continuously operated deep Anthracite coal mine in the world. Much of the equipment is still in place and our guide explains how things worked.*











***Not an easy way to make a living; those were real men!***



*We rode the final 50 miles to our motel. The restaurant where lunch had been planned was shut down due to Covid, so we survived on granola bars until dinner, by which point some of us were a bit 'hangry'. OK, me mostly. We dined on take-out food in our motel rooms. The next morning, we hit Bill's Old Bike Barn before opening. Bill and Judy opened just for us, and we had the run of the place for an hour or two.*

*A few years back, Bill commissioned Richard to chain-saw-carve these eagles.*



*The collection includes much more than just motorcycles.....*











*The destination was fascinating, the ride up and back equally fantastic. There were covered bridges and beautiful Autumn colors. Our bikes performed well; they seemed to like the cool weather. Pennsylvania's mountainous interior provides great scenery and challenging roads. Cruising the back roads on vintage bikes, where 70 mph is really, really fast is sublime, but hanging out with fellow enthusiasts is always the best part of any trip.*

*Thank-you Bill and Judy, and thanks to Rich, Jeremy, Chuck, Ed, and Doug; WELL DONE!*